

AMAN **N**SARA
NORTH

THE SHINING STAR



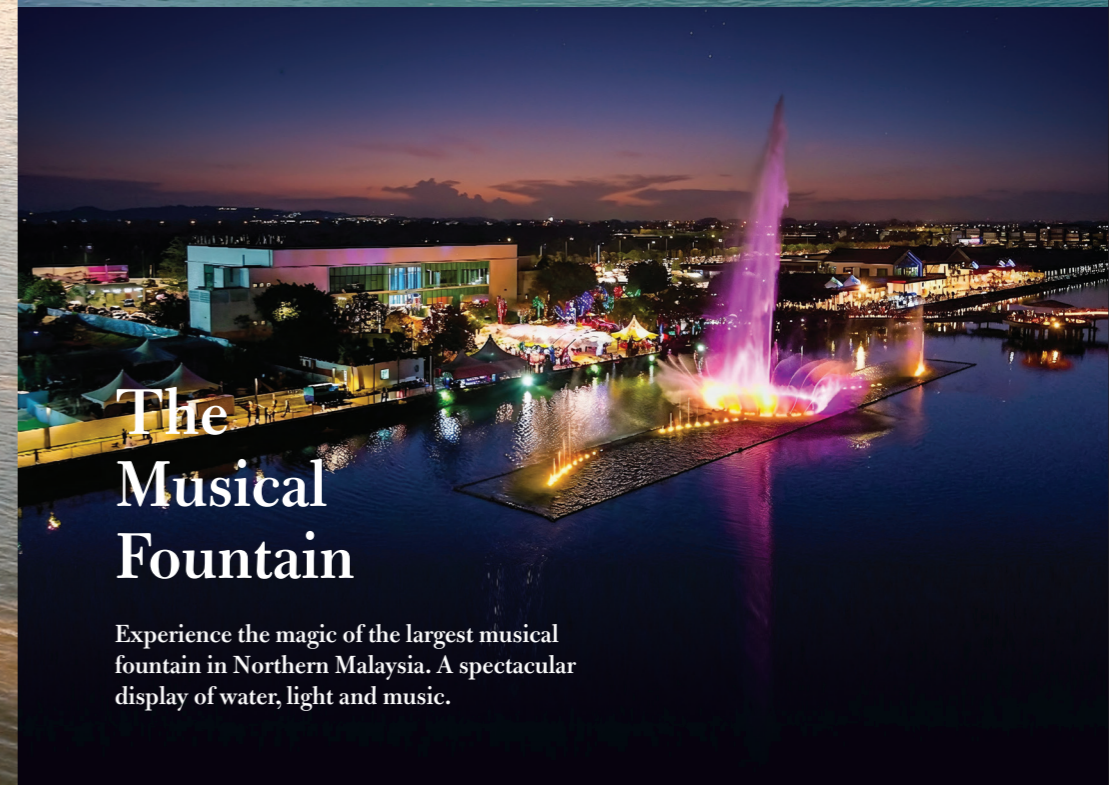
SETIA FONTAINES
Archipelago of Dreams

Spanning 1,691 acres of master-planned brilliance, Setia Fontaines isn't just a place to live, it's a landmark. Designed as a sustainable 'City of the Future,' it blends urban convenience with the tranquility of nature, creating a legacy for generations to come.



The 100-Acre Heritage Park

The green heart of our township.
A sprawling sanctuary for morning jogs,
family picnics and golden sunsets.



The Musical Fountain

Experience the magic of the largest musical fountain in Northern Malaysia. A spectacular display of water, light and music.



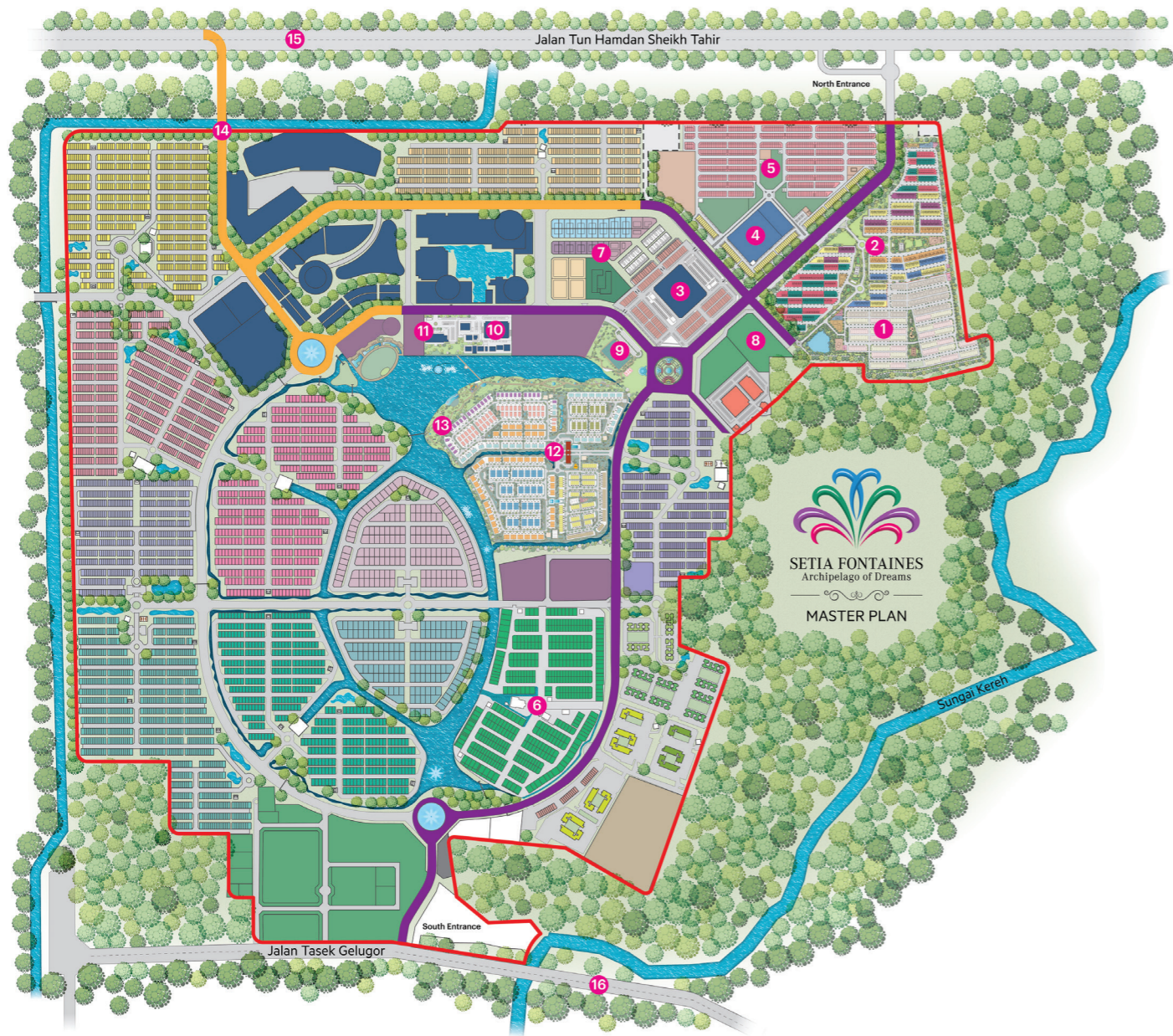
A closer look at home

Contemporary homes designed for a balanced pace

Experience a residential enclave where modern architecture meets a practical outdoor layout. Our homes at Amansara North are positioned to make the most of their surroundings, offering residents a pleasant, uncluttered environment for morning strolls or evening jogs.

It's about more than just a house, it's a well-planned neighborhood designed to keep you connected to what matters most.





Master Plan

- | | |
|-----------------------------------|----------------------------------|
| 1 Amansara South | 9 Townpark |
| 2 Amansara North | 10 Waterfront Lifestyle Centre |
| 3 City Centre Business Hub | 11 Setia Experience Centre |
| 4 City Centre Business Hub 2 | 12 NusaCinta |
| 5 Setia Suria | 13 Heritage Park |
| 6 Precinct 7 | 14 Proposed Flyover |
| 7 Flagship Centre | 15 Jalan Tun Hamdan Sheikh Tahir |
| 8 Proposed Chinese Primary School | 16 Jalan Tasek Gelugor |

Site Plan

1. Main Entrance Boulevard
2. Circus Garden
3. Blossom Garden
4. Pavilion of Festivity
5. Community Garden
6. Sunset Playground
7. Linear Park
8. Biophilic Garden
9. Pavilion of Essence
10. Learning Garden
11. Sunrise Playground
12. Activity Lawn
13. Fitness Area
14. Amphitheatre
15. Basketball Court
16. Sensory Garden

- | |
|---|
| Charm, Single Storey Terrace - 22' x 73' |
| Rejoice, Single Storey Terrace - 22' x 73' |
| Glamour, Double Storey Terrace - 22' x 73' |
| Shine, Double Storey Terrace - 22' x 73' |
| Enchant, Double Storey Terrace - 22' x 73' |
| Allure, Double Storey Superlink - 24' x 80' |





3 bedrooms



2 bathrooms

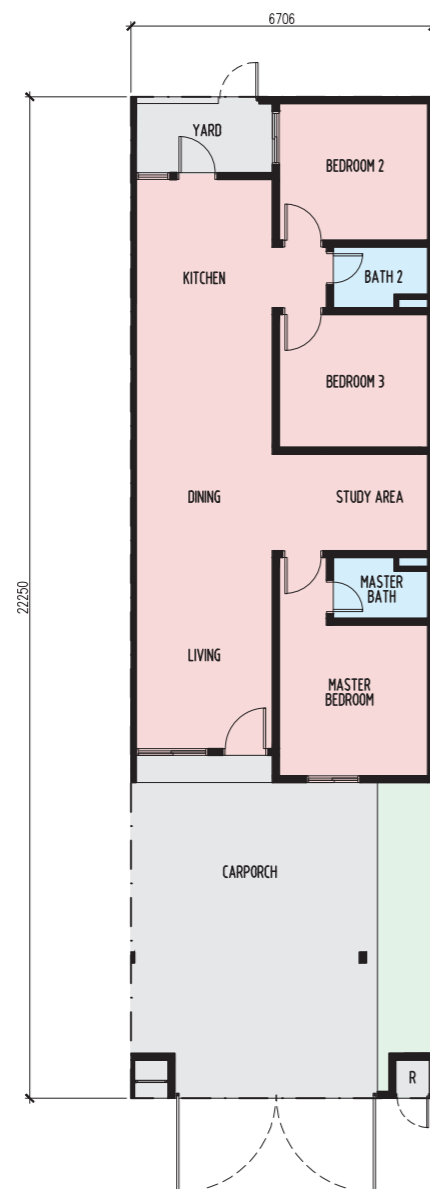


CHARM

SINGLE STOREY TERRACE

Land size: 22' x 73' • Built-up: From 1,385 sq.ft.

Intermediate unit



STRUCTURE	: Reinforced Concrete Frame			
WALL	: Brickworks with Plaster			
ROOFING COVERING	: Concrete Roof Tiles / Reinforced Concrete Roof Metal Deck Roofing at Car porch (Type D1, D2 & D2a)			
ROOF FRAMING	: Lightweight Steel Trusses / Steel Trusses			
CEILING	: Concrete Slab / Plaster Ceiling with Paint			
WINDOWS	: Aluminium Frame Glass Window			
DOORS	: Timber Flush Door : Aluminium Frame Glass Sliding Door : Mild Steel Grille Door : Aluminium Frame Louvers Door			
IRONMONGERY	: Approved Quality Lockset			
WALL FINISHES	: Plaster and Paint			
External Wall	: Plaster and Paint			
Baths Wall	: Tiles / Plaster and Paint			
Kitchen Wall	: Tiles / Plaster and Paint			
FLOOR FINISHES	: Cement Render			
Carporch, Apron	: Cement Render			
Living, Dining, Kitchen, Master Bedroom, Bedroom 2, Bedroom 3, Study Area, Yard, Terrace & All Baths	: Tiles			
SANITARY FITTINGS	Type D1	Type D2	Type D2a	Type D2b
Shower	2	2	2	2
Water Closet	2	2	2	2
Water Tap	5	4	4	4
Basin	2	2	2	2
Sink	1	1	1	1
ELECTRICAL INSTALLATION	Type D1	Type D2	Type D2a	Type D2b
Lighting Point	16	15	15	15
13A Power Point	18	18	18	18
Fan Point	5	5	5	5
Air-con Point	5	5	5	5
Fibre Wall Socket	1	1	1	1
Heater Point	2	2	2	2
TV Point	2	2	2	2
ELECTRICAL SUPPLY	: 1-Phase Power Supply			
FENCING & GATE	: Brickwall with Mild Steel Fencing			

*Floor Finishes (Apron & Terrace) are only applicable to end/corner units.



3 bedrooms



2 bathrooms

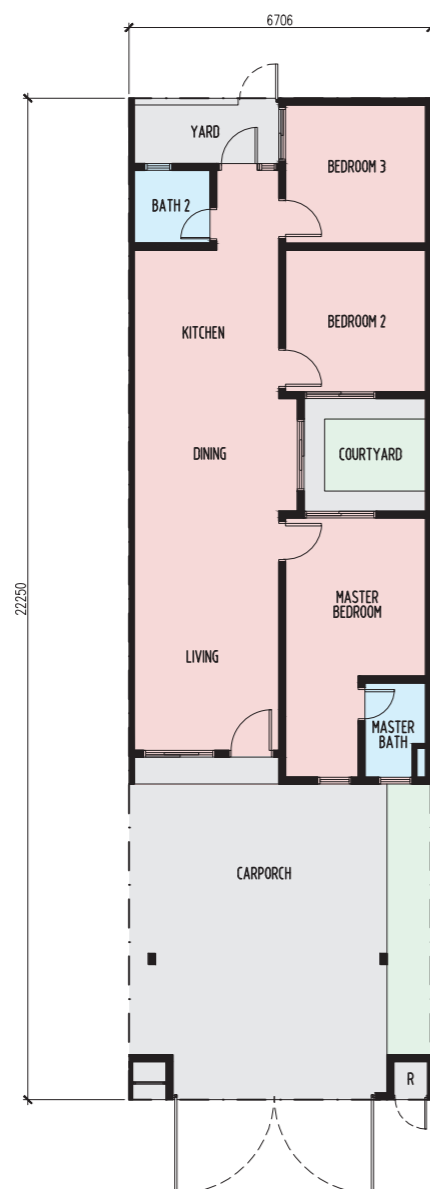


REJOICE

SINGLE STOREY TERRACE

Land size: 22' x 73' • Built-up: From 1,385 sq.ft.

Intermediate unit



STRUCTURE	: Reinforced Concrete Frame		
WALL	: Brickworks with Plaster		
ROOFING COVERING	: Concrete Roof Tiles		
ROOF FRAMING	: Lightweight Steel Trusses / Steel Trusses		
CEILING	: Concrete Slab / Plaster Ceiling with Paint		
WINDOWS	: Aluminium Frame Glass Window		
DOORS	: Timber Flush Door : Aluminium Frame Glass Sliding Door : Mild Steel Grille Door : Aluminium Frame Louvers Door		
IRONMONGERY	: Approved Quality Lockset		
WALL FINISHES	: Plaster and Paint : Plaster and Paint : Tiles : Tiles / Plaster and Paint		
FLOOR FINISHES	: Cement Render : Tiles : Soil		
SANITARY FITTINGS	Type E1	Type E2	Type E2a
Shower	2	2	2
Water Closet	2	2	2
Water Tap	6	5	5
Basin	2	2	2
Sink	1	1	1
ELECTRICAL INSTALLATION	Type E1	Type E2	Type E2a
Lighting Point	18	17	17
13A Power Point	17	17	17
Fan Point	5	5	5
Air-con Point	5	5	5
Fibre Wall Socket	1	1	1
Heater Point	2	2	2
TV Point	2	2	2
ELECTRICAL SUPPLY	: 1-Phase Power Supply		
FENCING & GATE	: Brickwall with Mild Steel Fencing		

*Floor Finishes (Apron & Terrace) are only applicable to end/corner units.



4 bedrooms



3 bathrooms



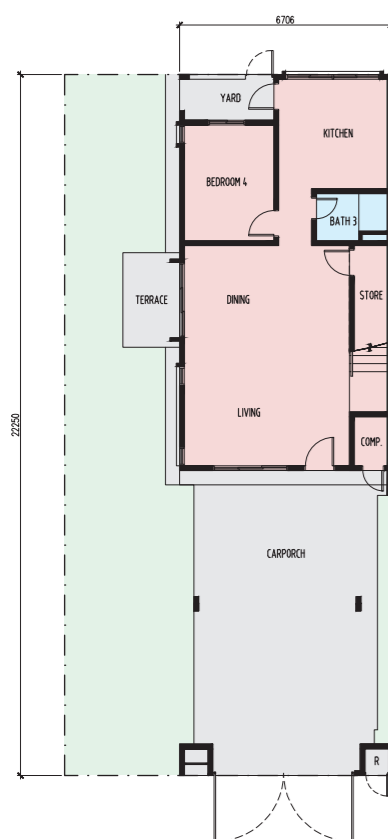
GLAMOUR

DOUBLE STOREY TERRACE

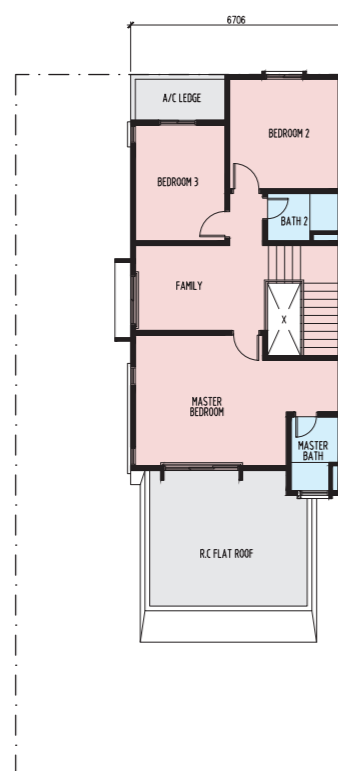
Land size: 22' x 73' • Built-up: From 2,119 sq.ft.

Corner / End unit

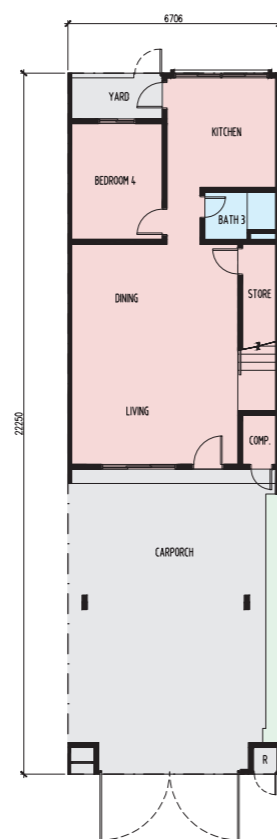
Intermediate unit



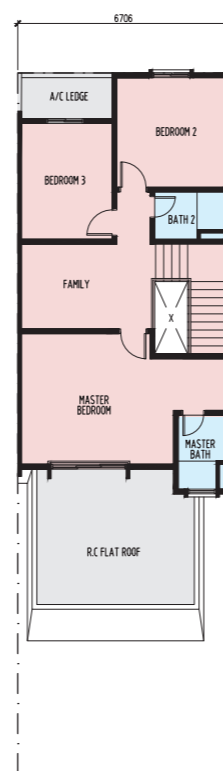
Ground floor



First floor



Ground floor



First floor

STRUCTURE	: Reinforced Concrete Frame		
WALL	: Brickworks with Plaster		
ROOFING COVERING	: Concrete Roof Tiles / Reinforced Concrete Roof		
ROOF FRAMING	: Lightweight Steel Trusses / Steel Trusses		
CEILING	: Concrete Slab / Plaster Ceiling with Paint		
WINDOWS	: Aluminium Frame Glass Window		
DOORS	: Timber Flush Door : Aluminium Frame Glass Sliding Door : Mild Steel Grille Door : Aluminium Frame Louvers Door		
IRONMONGERY	: Approved Quality Lockset		
WALL FINISHES	: Plaster and Paint		
External Wall	: Plaster and Paint		
Internal Wall	: Plaster and Paint		
Baths Wall	: Tiles		
Kitchen Wall	: Tiles / Plaster and Paint		
FLOOR FINISHES	: Cement Render		
Carporch, Apron, A/C Ledge, Store & Compartment	: Cement Render		
Living, Dining, Kitchen, Staircase, Master Bedroom, Bedroom 2, Bedroom 3, Bedroom 4, Family, Terrace, Yard & All Baths	: Tiles		
SANITARY FITTINGS	Type F1	Type F2	Type F2a
Shower	3	3	3
Water Closet	3	3	3
Water Tap	6	5	5
Basin	3	3	3
Sink	1	1	1
ELECTRICAL INSTALLATION	Type F1	Type F2	Type F2a
Lighting Point	26	25	25
13A Power Point	22	22	22
Fan Point	7	7	7
Air-con Point	7	7	7
Fibre Wall Socket	1	1	1
Heater Point	3	3	3
TV Point	3	3	3
ELECTRICAL SUPPLY	: 1-Phase Power Supply		
FENCING & GATE	: Brickwall with Mild Steel Fencing		

*Floor Finishes (Apron & Terrace) are only applicable to end/corner units.



4 bedrooms



3 bathrooms

SHINE

DOUBLE STOREY TERRACE

Land size: 22' x 73' • Built-up: From 2,174 sq.ft.

Intermediate unit



STRUCTURE	: Reinforced Concrete Frame		
WALL	: Brickworks with Plaster		
ROOFING COVERING	: Concrete Roof Tiles / Reinforced Concrete Roof		
ROOF FRAMING	: Lightweight Steel Trusses / Steel Trusses		
CEILING	: Concrete Slab / Plaster Ceiling with Paint		
WINDOWS	: Aluminium Frame Glass Window		
DOORS	: Timber Flush Door : Aluminium Frame Glass Sliding Door : Mild Steel Grille Door : Aluminium Frame Louvers Door		
IRONMONGERY	: Approved Quality Lockset		
WALL FINISHES	: Plaster and Paint		
External Wall	: Plaster and Paint		
Internal Wall	: Plaster and Paint		
Baths Wall	: Tiles		
Kitchen Wall	: Tiles / Plaster and Paint		
FLOOR FINISHES	: Cement Render		
Carporch, Apron, A/C Ledge, Compartment	: Cement Render		
Living, Dining, Kitchen, Staircase, Master Bedroom, Bedroom 2, Bedroom 3, Bedroom 4, Study Corner, Terrace, Family, Yard & All Baths	: Tiles		
SANITARY FITTINGS	Type G1	Type G2	Type G2a
Shower	3	3	3
Water Closet	3	3	3
Water Tap	6	5	5
Basin	3	3	3
Sink	1	1	1
ELECTRICAL INSTALLATION	Type G1	Type G2	Type G2a
Lighting Point	28	27	27
13A Power Point	22	22	22
Fan Point	7	7	7
Air-con Point	7	7	7
Fibre Wall Socket	1	1	1
Heater Point	3	3	3
TV Point	3	3	3
ELECTRICAL SUPPLY	: 1-Phase Power Supply		
FENCING & GATE	: Brickwall with Mild Steel Fencing		

*Floor Finishes (Apron & Terrace) are only applicable to end/corner units.



4 bedrooms



3 bathrooms



ENCHANT

DOUBLE STOREY TERRACE

Land size: 22' x 73' • Built-up: From 2,174 sq.ft.

Corner / End unit

Intermediate unit



STRUCTURE	: Reinforced Concrete Frame		
WALL	: Brickworks with Plaster		
ROOFING COVERING	: Concrete Roof Tiles / Reinforced Concrete Roof		
ROOF FRAMING	: Lightweight Steel Trusses / Steel Trusses		
CEILING	: Concrete Slab / Plaster Ceiling with Paint		
WINDOWS	: Aluminium Frame Glass Window		
DOORS	: Timber Flush Door : Aluminium Frame Glass Sliding Door : Mild Steel Grille Door : Aluminium Frame Louvers Door		
IRONMONGERY	: Approved Quality Lockset		
WALL FINISHES	: Plaster and Paint : Plaster and Paint : Tiles : Tiles / Plaster and Paint		
FLOOR FINISHES	: Cement Render : Tiles		
SANITARY FITTINGS	Type G3	Type G4	Type G4a
Shower	3	3	3
Water Closet	3	3	3
Water Tap	6	5	5
Basin	3	3	3
Sink	1	1	1
ELECTRICAL INSTALLATION	Type G3	Type G4	Type G4a
Lighting Point	28	27	27
13A Power Point	22	22	22
Fan Point	6	6	6
Air-con Point	6	6	6
Fibre Wall Socket	1	1	1
Heater Point	3	3	3
TV Point	2	2	2
ELECTRICAL SUPPLY	: 1-Phase Power Supply		
FENCING & GATE	: Brickwall with Mild Steel Fencing		

*Floor Finishes (Apron & Terrace) are only applicable to end/corner units.



4+1 bedrooms



5 bathrooms



ALLURE

DOUBLE STOREY SUPERLINK

Land size: 24' x 80' • Built-up: From 2,727 sq.ft.

Intermediate unit



STRUCTURE	: Reinforced Concrete Frame		
WALL	: Brickworks with Plaster		
ROOFING COVERING	: Concrete Roof Tiles / Reinforced Concrete Roof		
ROOF FRAMING	: Lightweight Steel Trusses / Steel Trusses		
CEILING	: Concrete Slab / Plaster Ceiling with Paint		
WINDOWS	: Aluminium Frame Glass Window		
DOORS	: Timber Flush Door : Aluminium Frame Glass Sliding Door : Mild Steel Grille Door : Aluminium Frame Louvers Door		
IRONMONGERY	: Approved Quality Lockset		
WALL FINISHES	: Plaster and Paint		
External Wall	: Plaster and Paint		
Internal Wall	: Plaster and Paint		
Baths Wall	: Tiles		
Kitchen Wall	: Tiles / Plaster and Paint		
FLOOR FINISHES	: Cement Render		
Carporch, Apron, A/C Ledge, Store	: Cement Render		
Living, Dining, Kitchen, Staircase, Master Bedroom, Bedroom 2, Bedroom 3, Bedroom 4, Family, Terrace, Yard, Utility, Patio & All Baths	: Tiles		
Courtyard	: Soil		
SANITARY FITTINGS	Type H1	Type H2	Type H2a
Shower	5	5	5
Water Closet	5	5	5
Water Tap	8	8	8
Basin	5	5	5
Sink	1	1	1
ELECTRICAL INSTALLATION	Type H1	Type H2	Type H2a
Lighting Point	35	35	35
13A Power Point	25	25	25
Fan Point	8	8	8
Air-con Point	7	7	7
Fibre Wall Socket	1	1	1
Heater Point	5	5	5
TV Point	3	3	3
ELECTRICAL SUPPLY	: 3-Phase Power Supply		
FENCING & GATE	: Brickwall with Mild Steel Fencing		

*Floor Finishes (Apron, Terrace & Patio) are only applicable to end/corner units.



EASY CONNECTIVITY

North-South Expressway	5KM
KTM Tasek Gelugor	7KM
BORR	15KM
Penang Bridge (1st Link)	26KM



HEALTHCARE

Hospital Kepala Batas	6.6KM
Seberang Jaya Hospital	21KM
Bagan Specialist Centre	22KM
KPJ Bandar Perda	28KM



EDUCATIONAL

Universiti Sains Malaysia (USM)	1KM
Institut Latihan Perindustrian	1KM
Maktab Rendah Sains MARA (MRSM)	1.6KM
SMK Sains Kepala Batas	2KM
Universiti Teknologi MARA (UiTM)	3KM
SJK(C) Pei Yu	6KM
Kolej MATrikulasi Pulau Pinang	8KM
SJK(C) Mah Hua	9KM
SJK(C) Nung Min	10KM
SJK(C) Kai Chee	16KM



GROCERIES & SHOPPING

City Centre Business Hub	500M
Mydin	1KM
Sunshine Bertam	4KM
Tesco	6KM
Sunway Carnival Mall	22KM
Pacific Megamall	24KM



F&B

McDonald's	4KM
Bertam Kiosk	4KM
Pizza Hut	5KM
Domino's Pizza	5KM
Secret Recipe	5KM
KFC	5KM



Call +604 576 2255

Setia Experience Centre (SEC)
2296, Lingkaran Setia, Bandar Setia Fontaines,
13200 Kepala Batas, Pulau Pinang, Malaysia

www.setiafontaines.com

SetiaFontaines

Setia

DEVELOPER: SETIA FONTAINES SDN BHD (505572-T) • Developer's License No: 19732/05-2028/0714(R) • Validity Date: 19/05/2023 – 18/05/2028 • Advertising and Sales Permit No.: 19732-6/03-2027/0317(R)-(L) • Validity Date: 17/03/2026 – 16/03/2027 • Building Plan Approving Authorities: Majlis Bandaraya Seberang Perai • Building Plan Approval No.: MPSP/40/20-06/155 • Land Tenure: Freehold • Land Encumbrances: Public Investment Bank Berhad • Expected Date of Completion: December 2026 • Double Storey Terrace • Total units: 97 unit • Price: RM720,000 (min) – RM900,000 (max) • Double Storey Superlink • Total units: 30 unit • Price: RM876,000 (min) – RM972,000 (max) • Bumiputera Discount: 5%

Disclaimer: All information contained herein is subject to changes without notification as may be required by relevant authorities and cannot form part of an offer or contract. Whilst every care has been taken in providing this information, the owner, the developer and managers cannot be held liable for variations. All pictures and illustrations are artist's impressions only. The items are subject to variations, modifications and substitutions as may be recommended by the relevant approving authorities.