

- CORNER
- END
- INTERMEDIATE
- BUMI



Setia  
eGreenLiving



## Smart Lock



**Solar PV  
Ready**



## Smart Home Wiring Ready



**Box 366**



**EV Port  
Ready**

Stay Together. Stay Setia  
livelearnworkplay

**07 861 0555**  
**www.spsetia.com**

**Yukong Development (PTE) Limited** 195102000014 (991872-U)  
PLO 12062, Jalan Persiaran Pelangi Indah, Taman Pelangi Indah,  
81800 Ulu Tiram, Johor Darul Takzim, Malaysia.

[illegible]

**THIS ADVERTISEMENT HAS BEEN APPROVED BY THE NATIONAL HOUSING DEPARTMENT**



## 2-STOREY SUPERLINK HOMES

24' x 80'





# THE ULTIMATE TROPICAL LIVING EXPERIENCE

Discover the ultimate tropical living experience in this exquisite 2-storey Superlink Home, designed to blend modern elegance with the serenity of lush, natural surroundings.

Every corner of Palmwood 3 invites you to indulge in a lifestyle of comfort and tranquility, making it the perfect sanctuary for those seeking a harmonious blend of nature and contemporary living.



Lot Size:  
24' x 80'



Built-up:  
2,069 - 2,193 sq. ft.



4 Bedrooms +  
4 Bathrooms



Private Bathroom  
for All Bedrooms  
Upstairs



High Ceiling for  
Improved Natural  
Ventilation

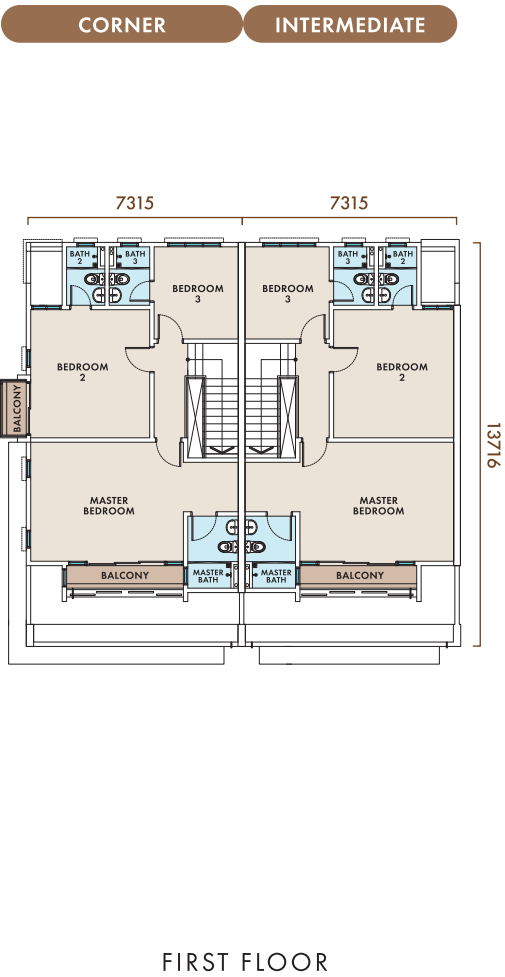
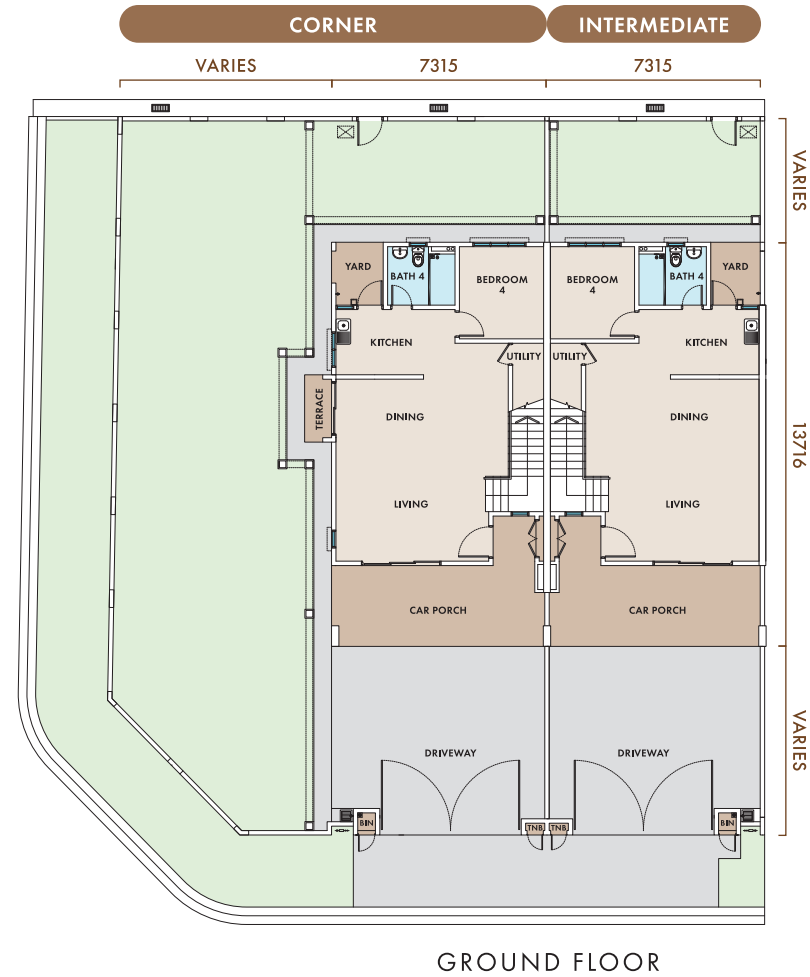


Master Bedroom  
with Walk-in  
Wardrobe Area



Spacious  
Car Porch

## FLOOR PLAN



## SPECIFICATIONS

|                         |   |                                       |  |                           |
|-------------------------|---|---------------------------------------|--|---------------------------|
| <b>Structure</b>        | : Reinforced Concrete Frame   | <b>Sanitary and Plumbing Fittings</b> | : W.C.   | 4 Nos.                    |
| <b>Wall</b>             | : Brickwall   | : Wash Basin                          | 4 Nos.   |                           |
| <b>Roofing Covering</b> | : Concrete Roof Tiles, Metal Roofing Sheet, Reinforced Concrete Flat Roof   | : Shower Head                         | 4 Nos.   |                           |
| <b>Roof Framing</b>     | : Quality Roof Truss  | : Toilet Role Holder                  | 4 Nos.   |                           |
| <b>Ceiling</b>          | : Plaster Ceiling Board, Asbestos Free Board, Skim Coat   | : Kitchen Sink                        | 1 No.  |                           |
| <b>Windows</b>          | : Aluminium Frame Glass Window  | : Bib Tap                             | 5 Nos.   |                           |
| <b>Doors</b>            | : Generally, Plywood Flush Doors<br>Aluminium Frame Glass Door<br>Solid Door for Entry  | <b>Electrical Installation</b>        |  | Corner / End Intermediate |
| <b>Ironmongery</b>      | : Selected Quality Lock Set   | : Lighting Point                      | 24   | 22                        |
| <b>Wall Finishes</b>    | : Emulsion Paint on Internal Plastered Walls<br>Weather Resistant Paint on External Walls<br>Porcelain Tiles to 2700mm Height in the Master Bathroom, Bath 2 & 3<br>Paint on Timber & Steel | : 13A Power Point                     | 17   | 17                        |
| <b>Floor Finishes</b>   | : Generally all in Porcelain Tiles<br>Cement Render to Others   | : 15A A/C Point                       | 5  | 5                         |
|                         |   | : 15A Cooker Point                    | 1  | 1                         |
|                         |   | : 20A Heater Point                    | 4  | 4                         |
|                         |   | : TV Point                            | 2  | 2                         |
|                         |   | : Ceiling Fan Point                   | 6  | 6                         |
|                         |   | : Auto Gate Point                     | 2  | 2                         |
|                         |   | : Door Bell Point                     | 1  | 1                         |
|                         |   | : Gate Lighting Point                 | 2  | 2                         |
|                         |   | : Wall Lighting Point                 | 2  | 2                         |
|                         |   | <b>Telecommunication System</b>       | : Fibre Wall Socket Data Point                       |                           |
|                         |   | <b>Fencing</b>                        | : Plastered Low Brick Wall & M.S. Fencing Metal Gate |                           |
|                         |   | <b>Turfing</b>                        | : Cow Grass  |                           |
|                         |   | <b>Gas Piping</b>                     | : Nil  |                           |

Note: The Developer shall at its own cost and expense, install or construct all of the items listed above in accordance to the description set out save for the item or items marked with an \* which may be deleted if not applicable.