



Only 40 exclusive units

Lot size: 22' x 75'

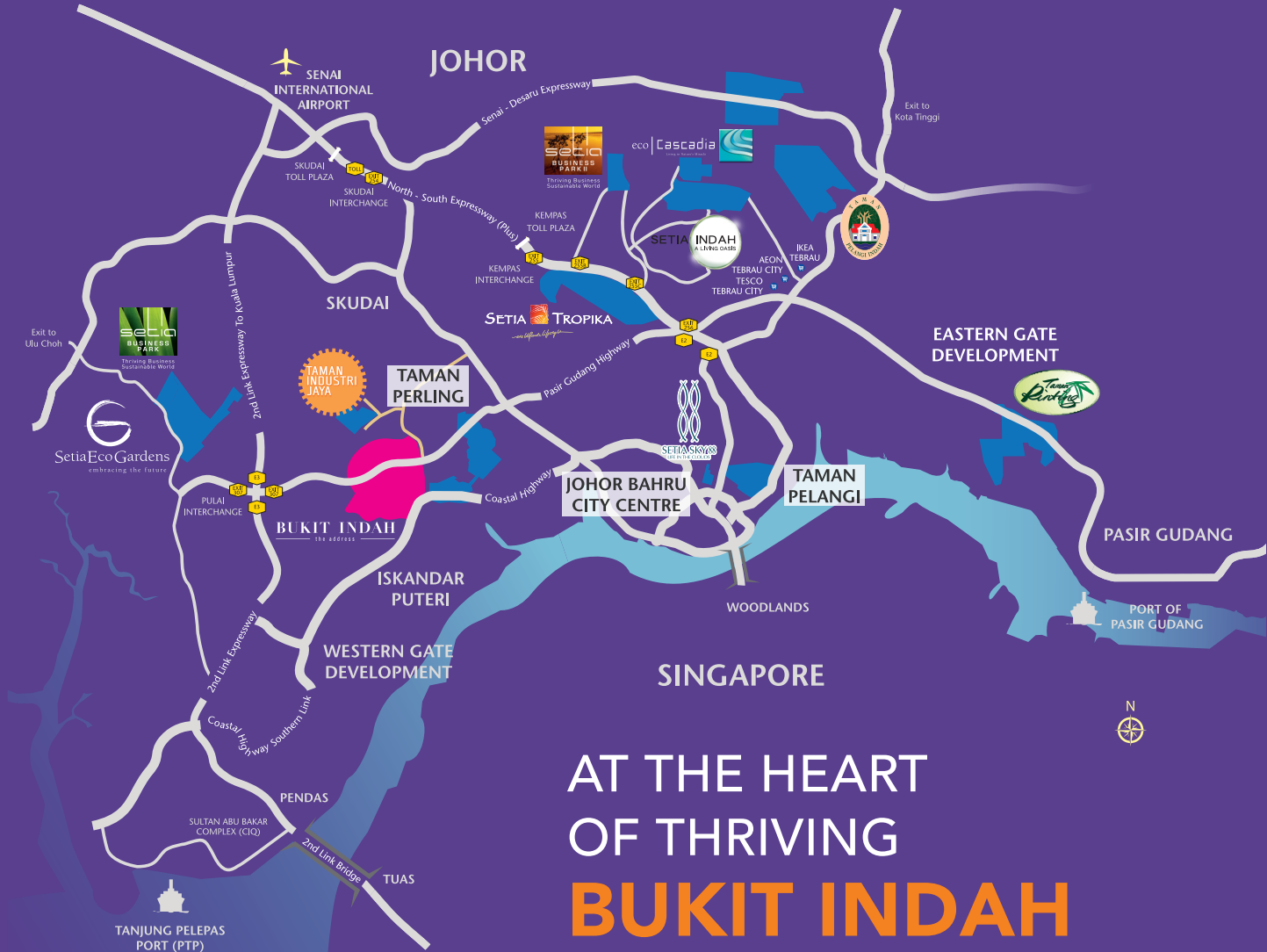
Built-up: 4,907 - 10,601 sq. ft.

Comes with balcony

Private lift lobby for corner units (4 storeys)

Population catchment of 450,000 (within 5 km radius)*

*Source: KGV International Property Consultants



AT THE HEART OF THRIVING BUKIT INDAH

The vibrant and verdant Bukit Indah is where thriving residential and commercial zones combine for ample population catchment. Better still, a matured highway network offers easy access to amenities and commercial centres.



Stay Together. Stay Setia
livelearnworkplay



+607 241 2255
Bukit Indah (Johor) Sdn Bhd 199401021581 (307260-V)
Wisma S P Setia, S3-0111, Indahwalk 3, Jalan Indah 15,
Taman Bukit Indah, 81200 Johor Bahru, Johor.
F +607 241 5955 W bukitindahjohor.com
Mon. to Fri.: 9am - 6pm • Sat., Sun. & P.H.: 10am - 6pm



The information contained herein is subject to change without notification as may be required by the authorities or developer's consultants and is not intended to form and cannot form part of an offer or contract.

BUKIT INDAH
the address



Indah Prime 3 & 4-Storey Shop Offices



STRIKING WORKSPACE FOR MODERN BUSINESSES

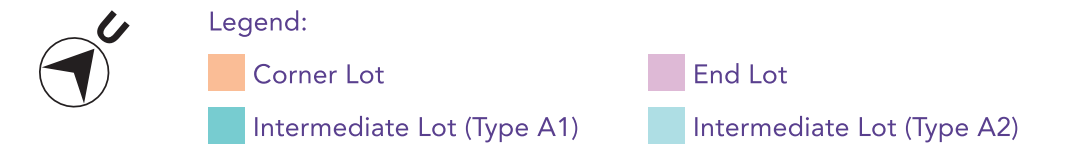
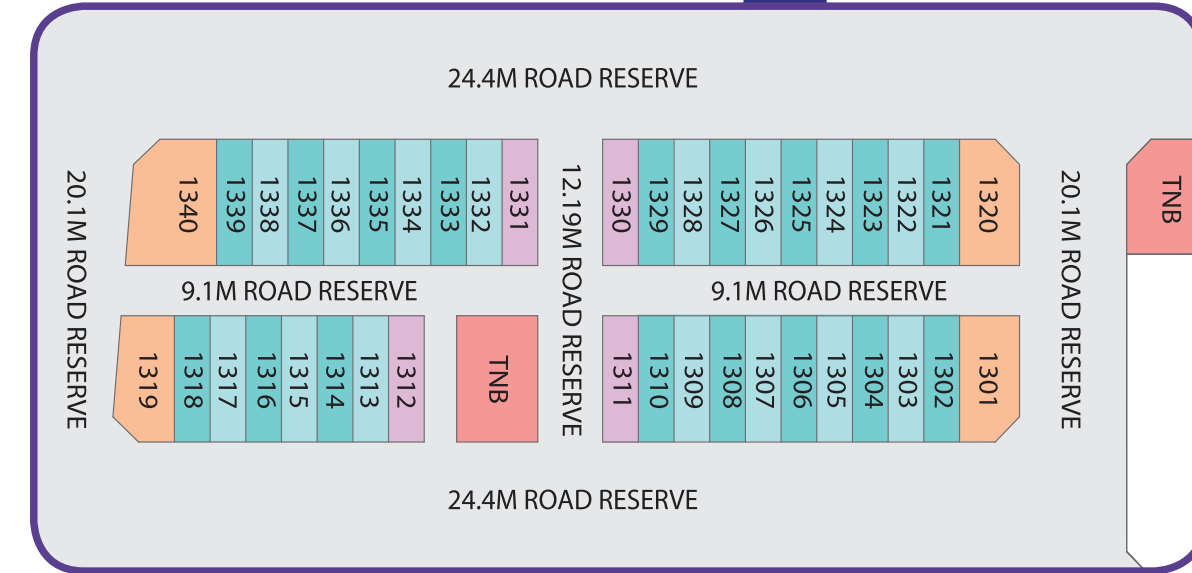
The stylish Indah Prime shop offices are the perfect choice for businesses catering to the needs of the community with retail, F&B, services and more.

Bukit Indah has a ready population catchment of 60,000 and combined with the 450,000* from surrounding matured residential enclaves within a 5 km radius, the potential of Indah Prime is a positive step towards business success.

*Source: KGV International Property Consultants



Site Plan



Floor Plans

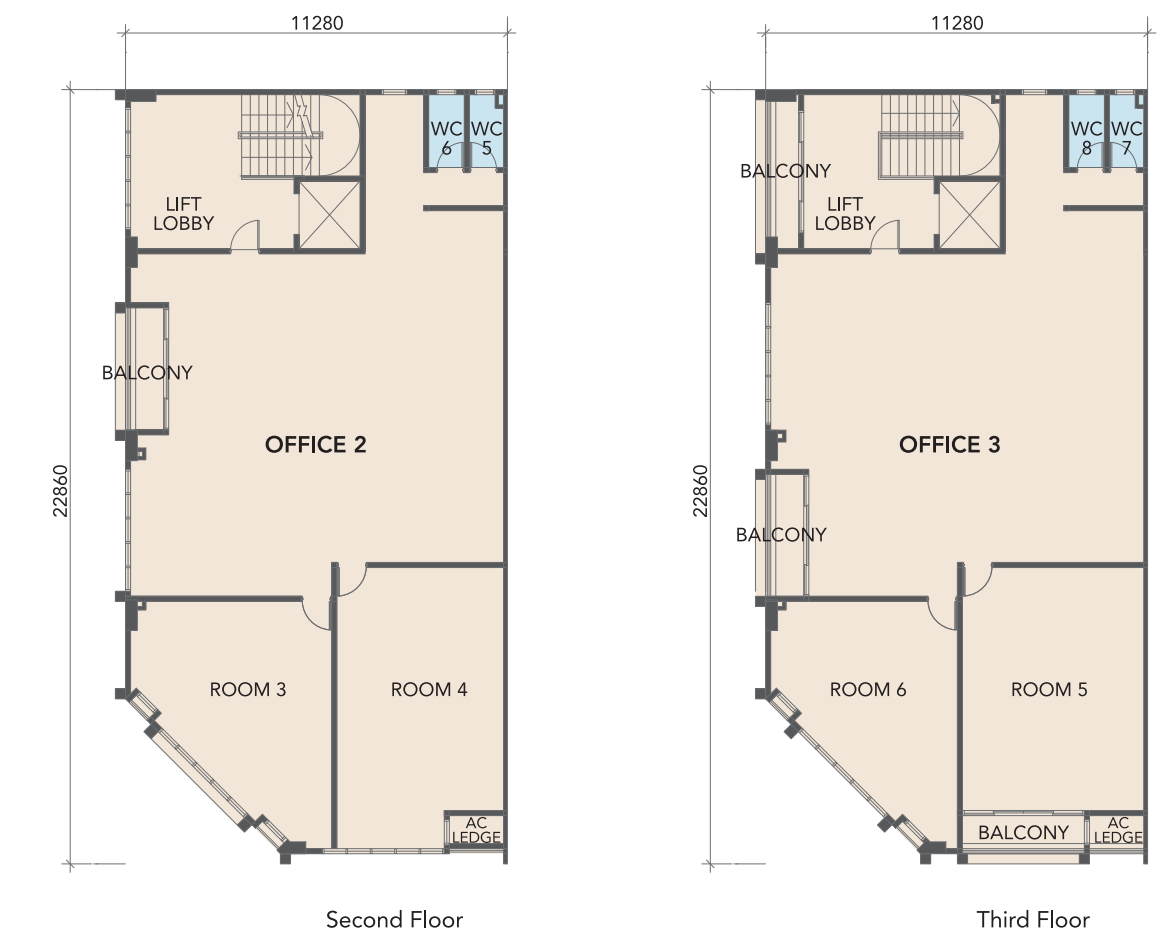
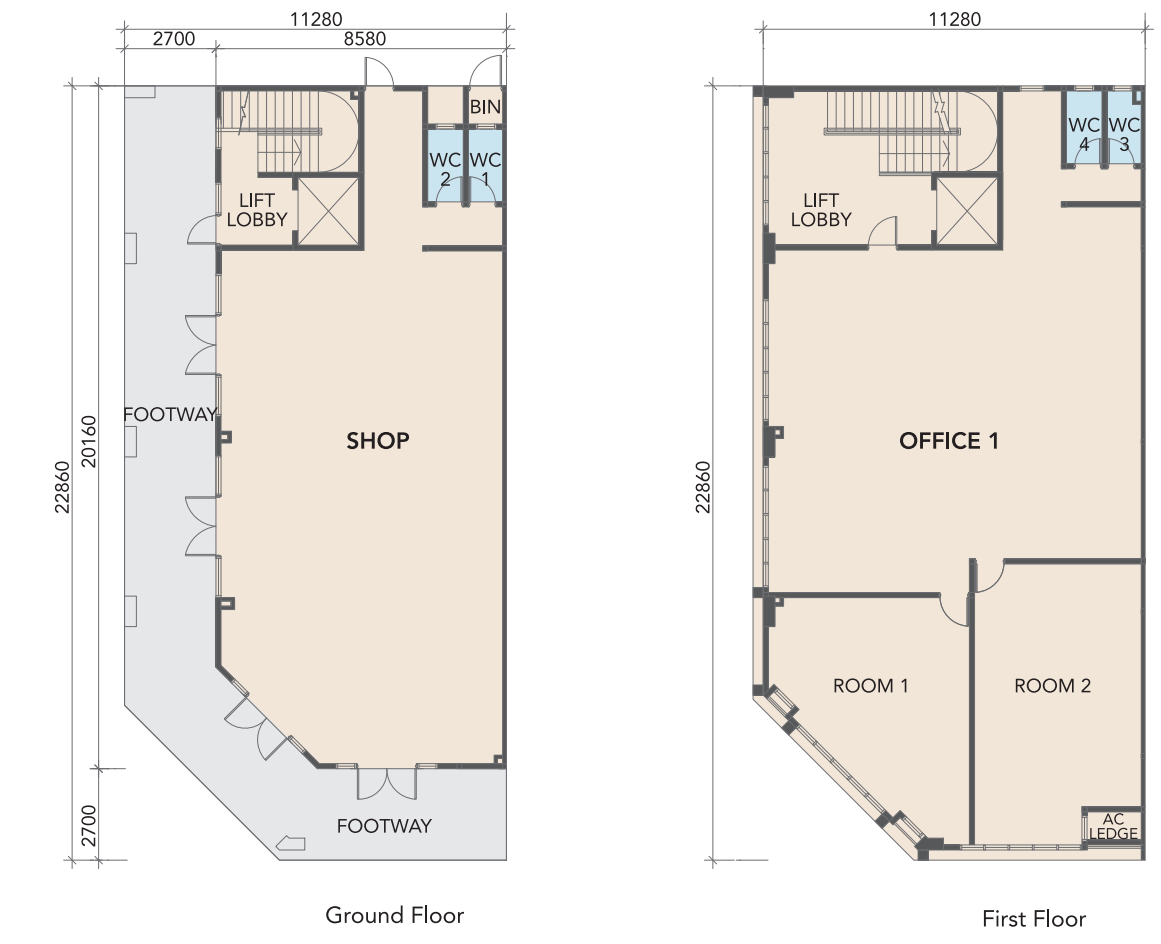
3-Storeys (Intermediate Lot - Type A1)



3-Storeys (Intermediate Lot - Type A2)



4-Storeys (Standard Corner Lot)



Specifications

Structure	: Reinforced concrete framework	
Wall	: Brickwall, reinforced concrete wall	
Roof Covering	: Metal deck roofing	
Roof Framing	: Quality roof truss	
Ceiling	: Plaster ceiling board, skim coat	
Windows	: Aluminium frame windows	
Doors	: Roller shutter, glass door, fire rated door, plywood flush door	
Ironmongeries	: Quality lockset	
Wall Finishes	: All water closets (WC) - 1500mm height tiles	
Floor Finishes	: All water closets (WC) & footway - tiles Others - Cement render	
Sanitary & Plumbing Fitting	: Quality sanitary wares with fittings	
Electrical Installation	Int./End lot	Corner lot
Lighting point	32 nos.	54 nos.
Power point (13A)	24 nos.	30 nos.
Fan point	9 nos.	15 nos.
Internal Telecommunication Trunking & Cabling	: Quality lockset	
Fiber wall socket	3 nos.	4 nos.

Note: The Developer shall, at its own cost and expense, install or construct all of the items listed above in accordance with the description set out save for the item or items marked with an * which may be deleted if not applicable.