

+607 333 2255
www.setiasky88.com



SETIA CITY DEVELOPMENT SDN BHD (933887-K)
SETIA SKY 88 SALES GALLERY
#03-02, Blok B, Pangsapuri Setia 88, Jalan Dato Abdullah Tahir, 80300 Johor Bahru, Johor.

SORA | NUBE



Towering 55 storeys high, Setia Sky 88 sets a new benchmark as one of the tallest residential towers in Iskandar Malaysia. This architectural landmark expresses a slim, strong geometrical identity which stands magnificently, framed by the city skyline. Life in the clouds aptly describes this residence with Sky Bungalows and Sky Semi-D's, complete with signature facilities that are a class above the rest. From the five-star hotel-style lobby with concierge service to an entertainment deck with a private clubhouse, the development also features an exclusive pool deck and a luxurious Wine Lounge - where one can dine and relax amidst the clouds.

ONE OF THE
**TALLEST
RESIDENTIAL
TOWERS**
IN JOHOR BAHRU

柔佛新山最高的
住宅公寓之一

A
**55-STORY
LANDMARK**

55层高楼地标

THE SKYLINE AWARD'S
**BEST HIGH-RISE
RESIDENTIAL
DEVELOPMENT**

荣获SKYLINE奖项
最佳高楼公寓
发展项目

作为马来西亚伊斯干达特区最高的住宅公寓之一，楼高55层的 Setia Sky 88 为住宅公寓项目注入了全新标准和定义。

这个崭新的建筑地标高耸挺立，外观别具一格，与优美的城市天际线相互勾勒出一幅壮丽景观。

其中，竖立于空中的独立式与半独立式单位的独特设计及其艳压同级公寓的独特附属设施，正恰如其分的描绘出奢华高尚的云端生活。从五星级别的公寓入口大厅设计、全方位礼宾服务、建设于娱乐甲板区的私人俱乐部、独特的

泳池甲板设计及奢华典雅的品酒坊等都让人仿佛置身于云霄间，尽享轻松写意生活。



BE THE EXCLUSIVE

Indulge yourself in the feeling of exclusivity each time you come home. Let the welcoming sense of luxury and the elegant decor gently put your mind at ease the moment you step into the Grand Lobby. Designed to be an address of prestige and grandeur, each day is made even more comfortable with friendly concierge and shuttle services at your doorstep.

专属优势

置身专属于您的家园氛围就从踏入典雅大厅的那刻起。
贴心的专车载送及亲切友善的礼宾服务皆为您每一天的奢华生活掀开完美序幕。



BE THE CLOUD CHASER

Life at Setia Sky 88 is made sweeter for a lifestyle of modernity with a host of facilities on the podium floor. Whether you want to be active, unwind and relax for the day or simply take in a beautiful sunset, you can be sure that you can enjoy it all here - living life up in the clouds.

云雾间品味生活

Setia Sky 88的丰富多元设施让您的云端生活趋向完美。无论是追求动态活动、静态休闲或是静心观赏夕阳美景，您都可以在云雾间品味至高无上的空中生活。





SETIA SKY 88
LIFE IN THE CLOUDS



BE THE DISTINGUISHED

Signature 88 (Level 3)

Grand Drop-Off Entrance • Visitor's Lounge • Business Centre

Club 88 (Levels 8-9)

Infinity Pool • Theatre Room • Music Room • Squash Court • Gymnasium

Cloud 88 (Levels 42-44)

Dip Pool With Aqua Gym • Sky Gym • Gourmet Kitchen • Wine Lounge • Karaoke Room

卓越设施

88标志楼 (第3层)

气派接待出入口 • 堂皇雕塑大厅 • 访客接待厅 • 商务会议室

88俱乐部 (第8, 9层)

壮丽泳池 • 家庭式影院 • 音乐室 • 壁球场 • 健身房

88云端楼 (第42至44层)

水中健身浴池与室内泳池 • 空中健身房 • 料理厨房 • 品酒坊 • 卡拉OK房

Standard Floor Plan

Level 10-13, 15-18, 20-23, 25-28, 30-33, 35-38, 40-41

Breaktank at Level 16, 17, 32 & 33 for unit 03



Balcony Floor Plan

Level 14, 19, 24, 29, 34, 39



Penthouse Floor Plan

Level 45-51



Structure	Reinforced concrete structure	Ironmongery	Quality locksets
Wall	Reinforced concrete wall / Brick wall	Wall tiles	Kitchen Bathroom / Toilet - 7" height ceramic wall tiles where applicable to kitchen - Full height ceramic wall tiles till ceiling level
Roofing covering	Reinforced concrete roof	Floor finishes	Living / Dining / Kitchen All bedrooms All toilets Balcony Yard Utility Other areas - Porcelain tiles - Laminated timber flooring - Ceramic tiles - Ceramic tiles - Ceramic tiles - Laminated timber flooring - Cement render
Roof framing	Reinforced concrete		
Ceiling	Skim coat / Plaster ceiling		
Windows	Aluminium frame window		
Doors	Main entrance All bedrooms / Toilets / Utilities Balcony unit only	- Fire rated door - Flush door - Aluminium frame glass sliding door	

Sanitary & plumbing fittings

	MB1+1 (A1)	MB1+1 (A2)	MB1+1 (A3)	MB1+1 (B1)	MB1+1 (B2)	MB2 (C1)	MB3 (D1)	MB1+1 (A1b)	MB1+1 (A2b)	MB1+1 (A3b)	MB1+1 (B1b)	MB1+1 (B2b)	MB2 (C1b)	MB3 (D1b)	MB3 (E1)	MB3 (E2)	MB3 (F1)	MB3 (F2)	MB Studio 1	MB Studio 2
Kitchen sink	1	1	1	1	1	1	1	1	1	1	1	1	1	1	1	1	1	1	1	1
Wash basin	1	1	1	2	2	2	2	1	1	1	2	2	2	2	2	3	3	3	1	1
Toilet roll holder	1	1	1	2	2	2	2	1	1	1	2	2	2	2	2	3	3	3	1	1
Shower rose	1	1	1	2	2	2	2	1	1	1	2	2	2	2	2	3	3	3	1	1
W.C.	1	1	1	2	2	2	2	1	1	1	2	2	2	2	2	3	3	3	1	1

Electrical installation

	MB1+1 (A1)	MB1+1 (A2)	MB1+1 (A3)	MB1+1 (B1)	MB1+1 (B2)	MB2 (C1)	MB3 (D1)	MB1+1 (A1b)	MB1+1 (A2b)	MB1+1 (A3b)	MB1+1 (B1b)	MB1+1 (B2b)	MB2 (C1b)	MB3 (D1b)	MB3 (E1)	MB3 (E2)	MB3 (F1)	MB3 (F2)	MB Studio 1	MB Studio 2
Lighting point	11	11	11	12	12	13	14	12	12	12	13	13	14	15	15	17	17	17	6	7
Power point (13A)	14	14	14	14	14	16	18	14	14	14	14	14	16	18	19	19	19	19	9	9
Ceiling fan point	3	3	3	3	3	3	4	3	3	3	3	3	3	4	4	4	4	4	1	1
TV	2	2	2	2	2	2	2	2	2	2	2	2	2	2	2	2	2	2	1	1
Water heater point	1	1	1	1	1	1	1	1	1	1	1	1	1	1	2	2	2	2	1	1
Air-cond point	3	3	3	3	3	3	4	3	3	3	3	3	3	4	4	4	4	4	1	1
Door bell point	1	1	1	1	1	1	1	1	1	1	1	1	1	1	1	1	1	1	1	1

Internal telephone trunking & cabling

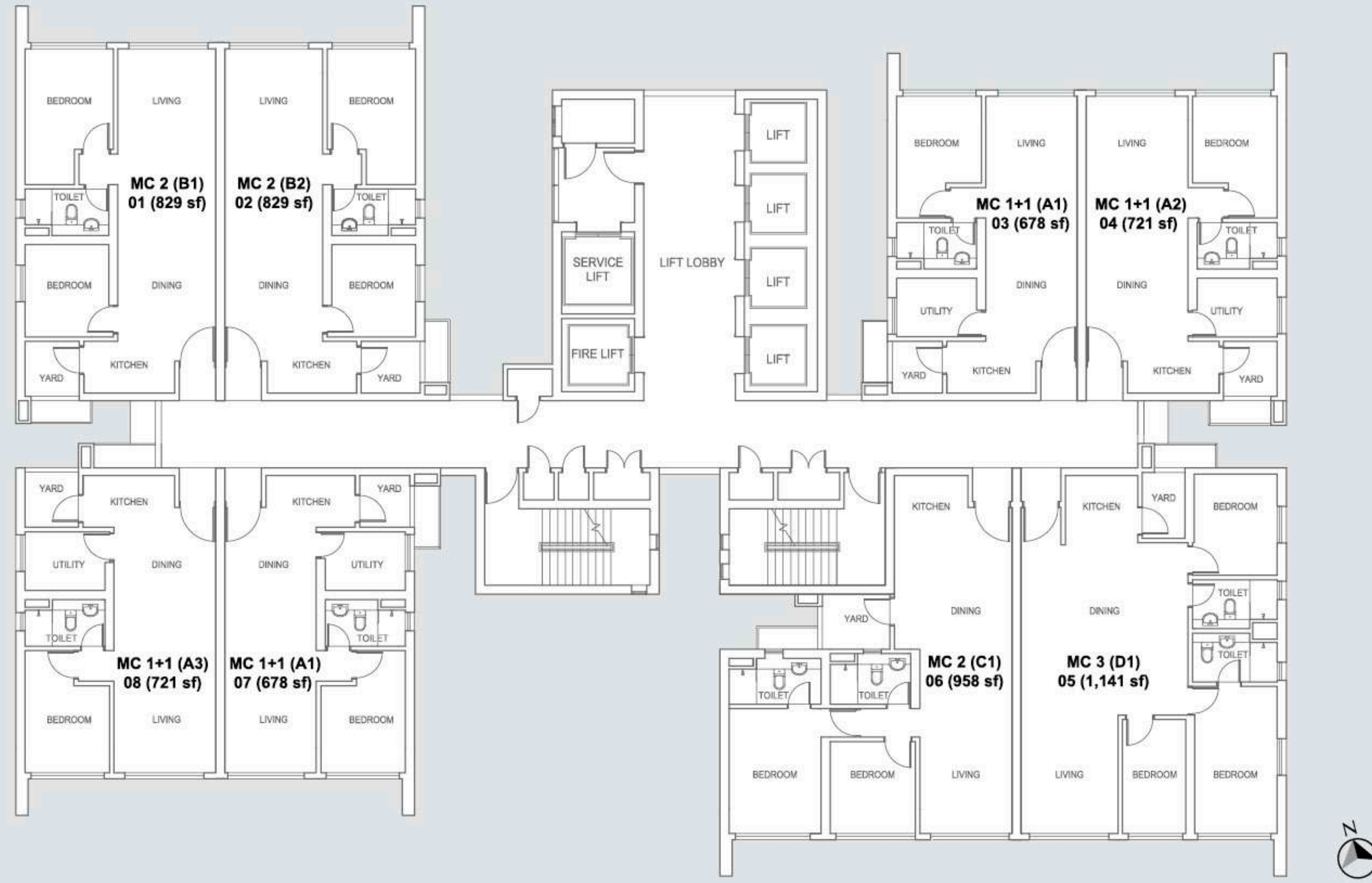
	MB1+1 (A1)	MB1+1 (A2)	MB1+1 (A3)	MB1+1 (B1)	MB1+1 (B2)	MB2 (C1)	MB3 (D1)	MB1+1 (A1b)	MB1+1 (A2b)	MB1+1 (A3b)	MB1+1 (B1b)	MB1+1 (B2b)	MB2 (C1b)	MB3 (D1b)	MB3 (E1)	MB3 (E2)	MB3 (F1)	MB3 (F2)	MB Studio 1	MB Studio 2
	1	1	1	1	1	1	1	1	1	1	1	1	1	1	1	1	1	1	1	1

Fencing - N/A Turfing - N/A Gas piping - N/A

Standard Floor Plan

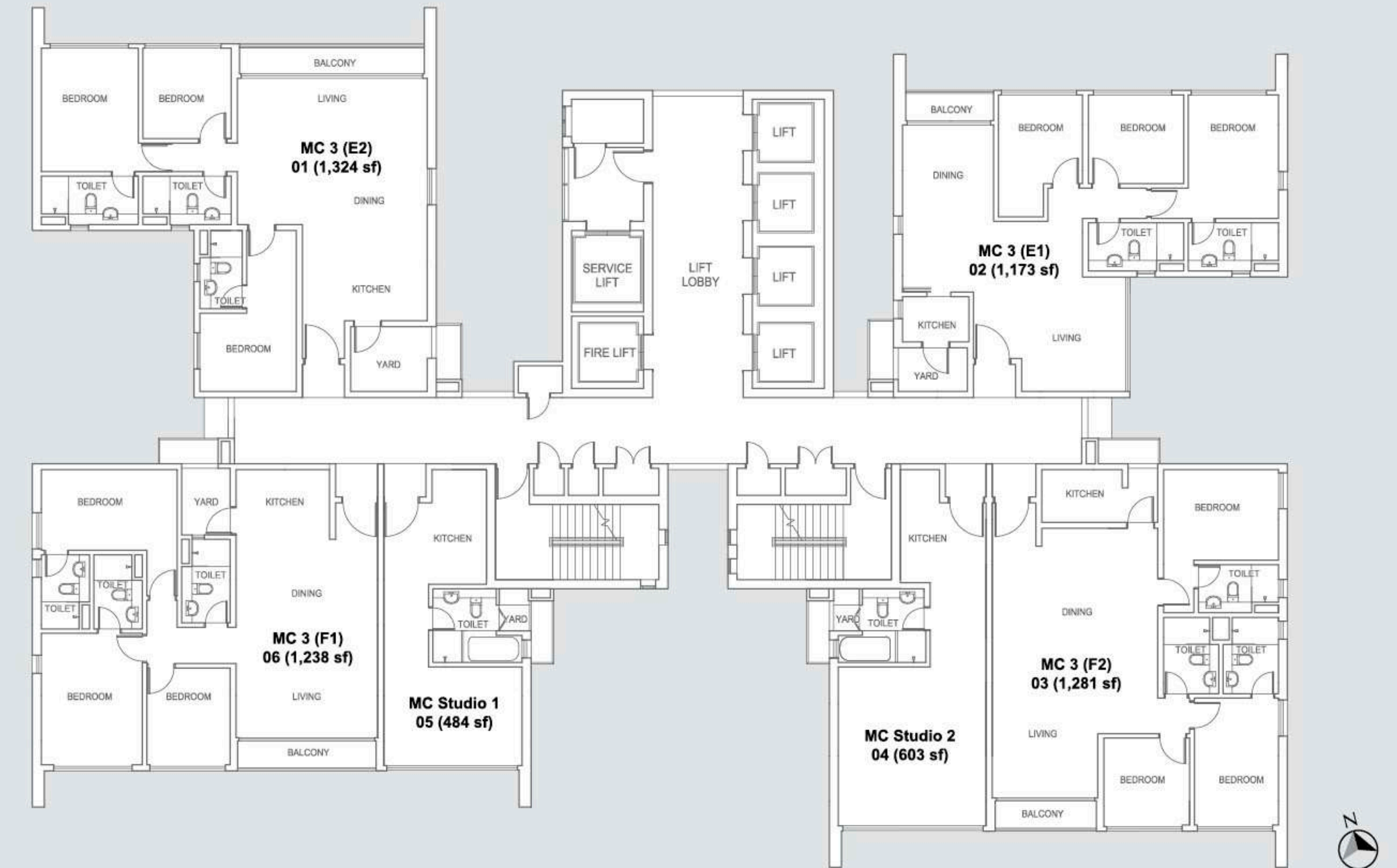
Level 10-13, 15-18, 20-23, 25-28, 30-33, 35-38, 40-41

Breaktank at Level 16, 17, 32 & 33 for unit 03



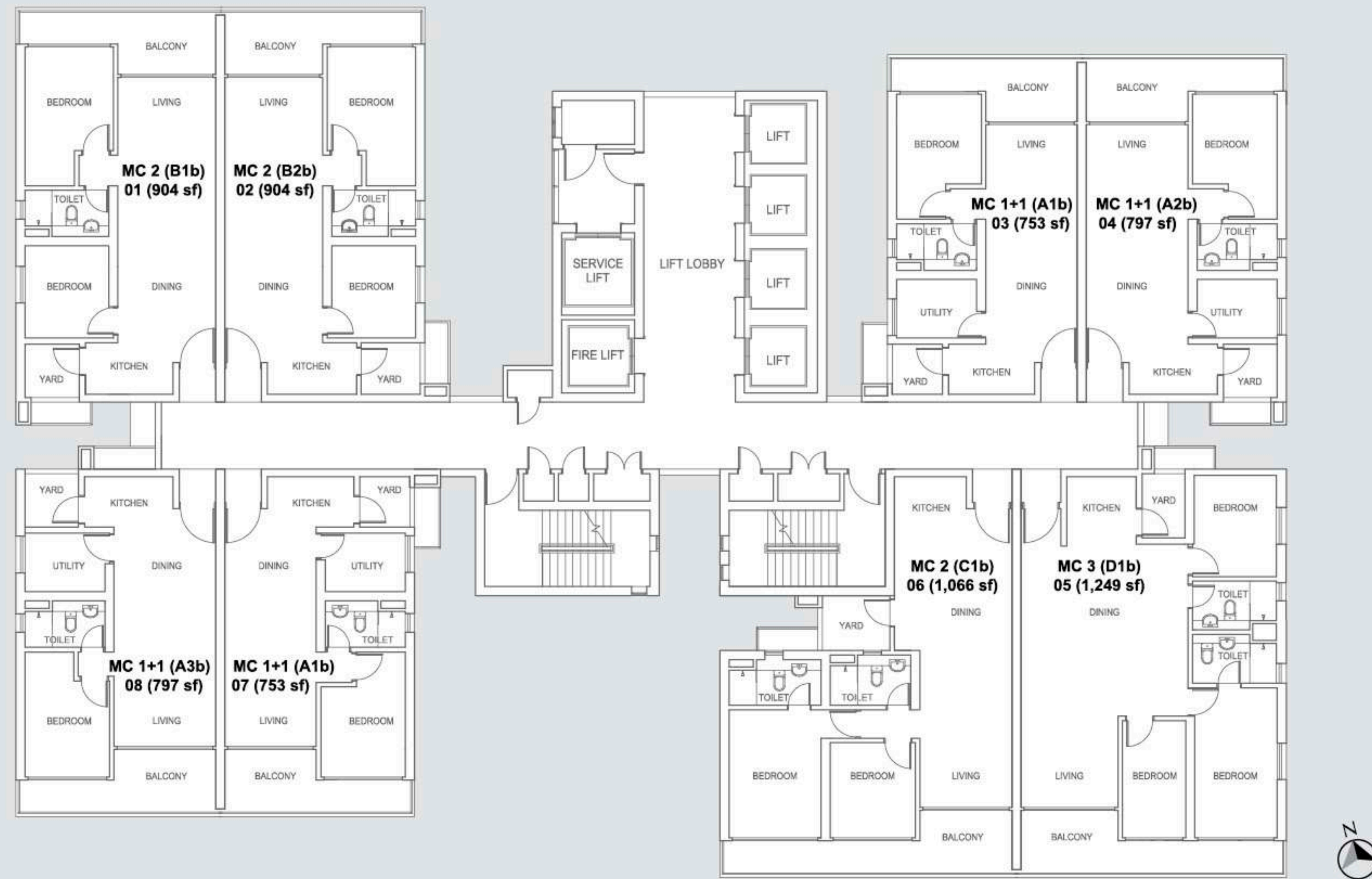
Penthouse Floor Plan

Level 45-51



Balcony Floor Plan

Level 14, 19, 24, 29, 34, 39



Structure	Reinforced concrete structure	Ironmongery	Quality locksets
Wall	Reinforced concrete wall / Brick wall	Wall tiles	Kitchen - 7' height ceramic wall tiles where applicable to kitchen Bathroom / Toilet - Full height ceramic wall tiles till ceiling level
Roofing covering	Reinforced concrete roof	Floor finishes	Living / Dining / Kitchen - Marble flooring All bedrooms - Laminated timber flooring All toilets - Ceramic tiles Balcony - Ceramic tiles Yard - Laminated timber flooring Utility - Laminated timber flooring Other areas - Cement render
Roofing framing	Reinforced concrete		
Ceiling	Skim coat / Plaster ceiling		
Windows	Aluminium frame window		
Doors	Main entrance - Fire rated door All bedrooms / Toilets / Utilities - Flush door Balcony unit only - Aluminium frame glass sliding door		

Sanitary & plumbing fittings

	MC1+1 (A1)	MC1+1 (A2)	MC1+1 (A3)	MC2 (B1)	MC2 (B2)	MC2 (C1)	MC3 (D1)	MC1+1 (A1b)	MC1+1 (A2b)	MC1+1 (A3b)	MC2 (B1b)	MC2 (B2b)	MC2 (C1b)	MC3 (D1b)	MC3 (E1)	MC3 (E2)	MC3 (F1)	MC3 (F2)	MC Studio 1	MC Studio 2
Kitchen sink	1	1	1	1	1	1	1	1	1	1	1	1	1	1	1	1	1	1	1	1
Wash basin	1	1	1	1	1	2	2	1	1	1	1	2	2	2	2	3	3	3	1	1
Toilet roll holder	1	1	1	1	1	2	2	1	1	1	1	2	2	2	3	3	3	1	1	1
Shower rose	1	1	1	1	1	2	2	1	1	1	1	2	2	2	3	3	3	1	1	1
W.C.	1	1	1	1	1	2	2	1	1	1	1	2	2	2	3	3	3	1	1	1

Electrical installation

	MC1+1 (A1)	MC1+1 (A2)	MC1+1 (A3)	MC2 (B1)	MC2 (B2)	MC2 (C1)	MC3 (D1)	MC1+1 (A1b)	MC1+1 (A2b)	MC1+1 (A3b)	MC2 (B1b)	MC2 (B2b)	MC2 (C1b)	MC3 (D1b)	MC3 (E1)	MC3 (E2)	MC3 (F1)	MC3 (F2)	MC Studio 1	MC Studio 2
Lighting point	11	11	11	11	11	13	13	12	12	12	12	12	13	15	15	17	17	17	6	7
Power point (13A)	14	14	14	14	14	16	18	14	14	14	14	14	16	18	19	19	19	19	9	9
Ceiling fan point	3	3	3	3	3	3	4	3	3	3	3	3	3	4	4	4	4	4	1	1
TV	2	2	2	2	2	2	2	2	2	2	2	2	2	2	2	2	2	2	1	1
Water heater point	1	1	1	1	1	1	1	1	1	1	1	1	1	1	2	2	2	2	1	1
Air-cond point	3	3	3	3	3	3	4	3	3	3	3	3	3	4	4	4	4	4	1	1
Door bell point	1	1	1	1	1	1	1	1	1	1	1	1	1	1	1	1	1	1	1	1

Internal telephone trunking & cabling

	MC1+1 (A1)	MC1+1 (A2)	MC1+1 (A3)	MC2 (B1)	MC2 (B2)	MC2 (C1)	MC3 (D1)	MC1+1 (A1b)	MC1+1 (A2b)	MC1+1 (A3b)	MC2 (B1b)	MC2 (B2b)	MC2 (C1b)	MC3 (D1b)	MC3 (E1)	MC3 (E2)	MC3 (F1)	MC3 (F2)	MC Studio 1	MC Studio 2
	1	1	1	1	1	1	1	1	1	1	1	1	1	1	1	1	1	1	1	1

Fencing - N/A

Turfing - N/A

Gas piping - N/A