

**NADI 2**  
@ SETIA ECOHILL 2

**2 & 3 STOREY  
SHOP OFFICES**

# NEW ICONIC SHOPLOTS IN THE 1,010-ACRE TOWNSHIP

2-Storey  
Semi-D Shop

3-Storey  
Corner Shop

2-Storey  
Terrace Shop

Artist's Impression

## WHY NADI



100,000  
Ready  
Catchment



Surrounded by  
3,000-acre  
Matured Township



Wide Shopfront  
& Practical  
Layout



Adjacent to  
5,000-unit  
Apartment



Strategic  
Location



Ample  
Parking Space



Art Studio / Daycare Centre



Office / Retail



F&B / Bakery



Beauty Salon / Clinic

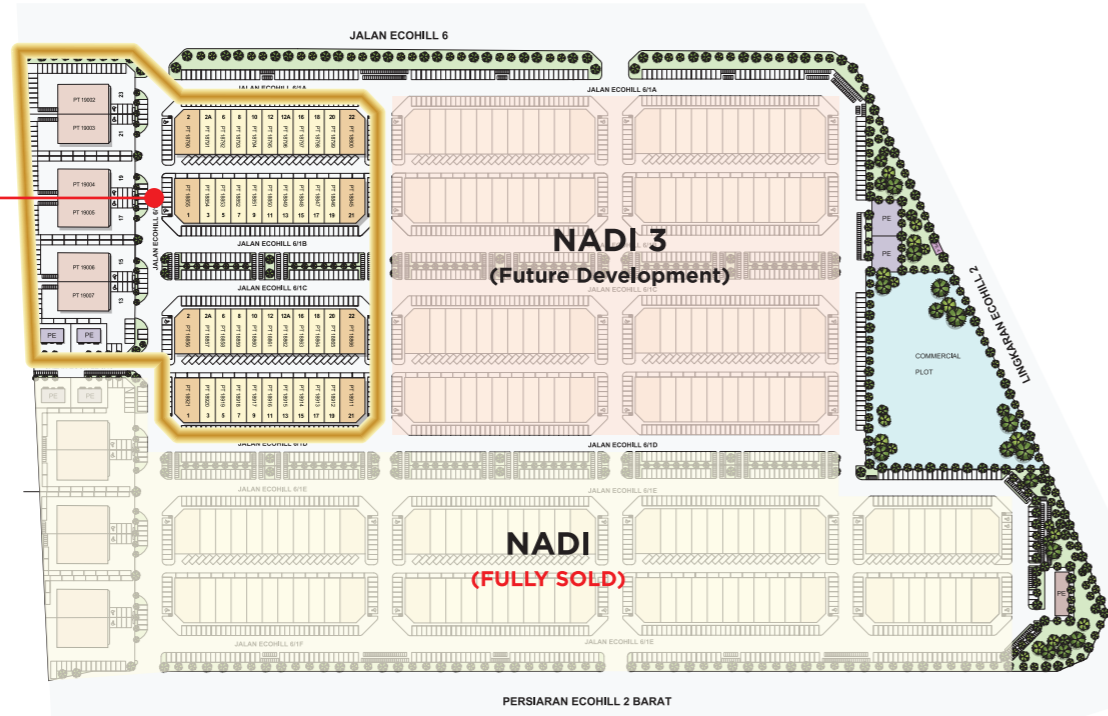
## Versatile Layouts Catering to Diverse Business Needs

Strategically located next to the bustling EcoHill 2 Link, Nadi is situated on an extremely visible location with high traffic daily. Offering practical 26-foot shop frontage, these shop offices are ideal for a wide range of businesses catering to the growing township.

# 2 & 3 STOREY SHOP OFFICES



# Site Plan



- 2 - STOREY INTERMEDIATE TERRACE SHOP
- 3 - STOREY CORNER TERRACE SHOP
- 2 - STOREY SEMI-D SHOP

**NADI2**  
@ SETIA ECOHILL 2



**STRATEGICALLY INCORPORATING  
BUSINESS AND LIFESTYLE  
WITHIN A SINGLE  
MASTERPLAN**

- LEGEND**
- Double Storey Terrace House
  - Linked Semi-Detached
  - Apartment
  - Superlink
  - Business Park
  - Commercial

# Terrace Shop



Column Free Facade



Wide Shopfront



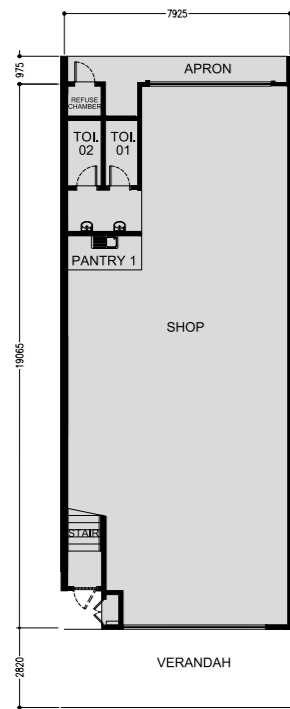
Wide Front Walkways



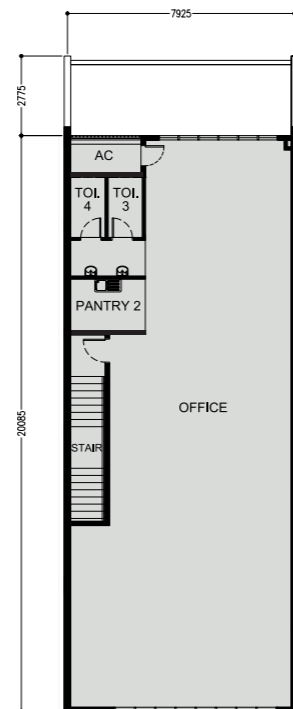
Artist's Impression

## 2-STOREY INTERMEDIATE SHOP

Land Size: 26' x 75' | Built-Up: 3,585 sqft



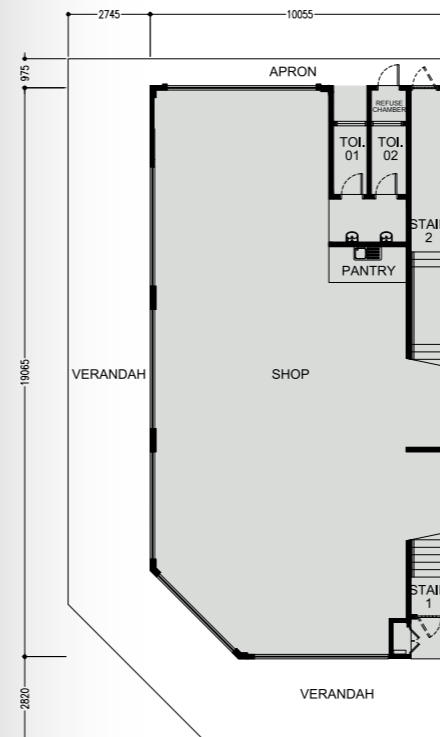
Ground Floor



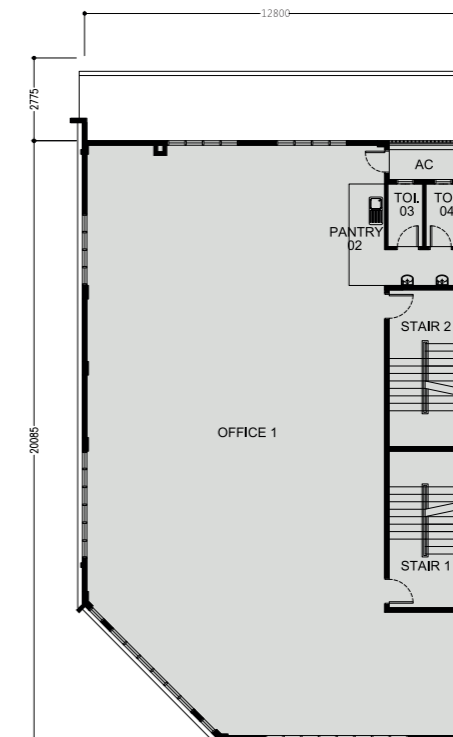
First Floor

## 3-STOREY CORNER SHOP

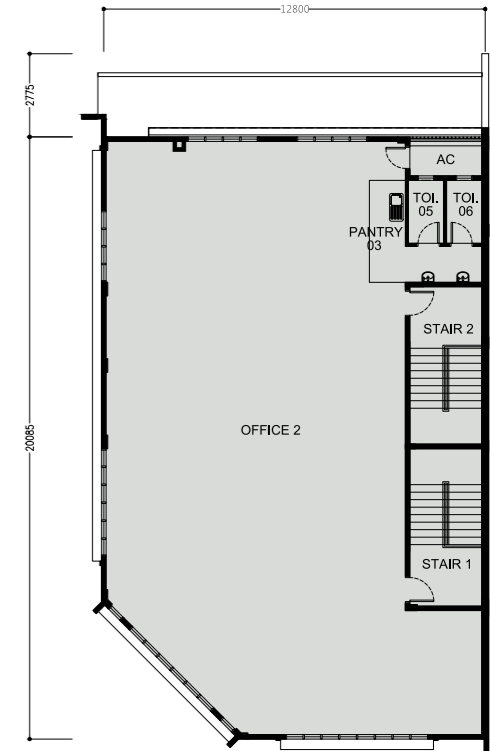
Land Size: 42' x 75' | Built-Up: 8,202 sqft



Ground Floor



First Floor



Second Floor

# Semi-D Shop



Artist's Impression

## KEY FEATURES



Limited to 6 Units



Minimum of 18 Private Parking Space



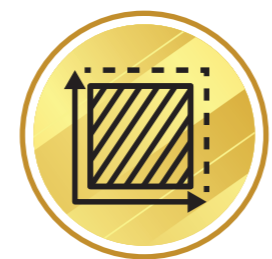
Timeless & Elegant Design



Ceiling Heights of up to 20 feet



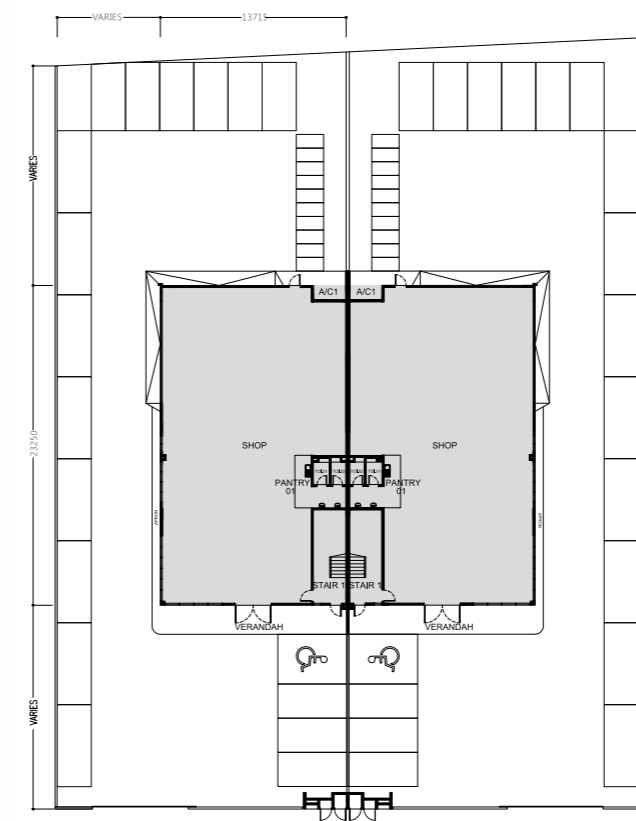
45-foot Shopfront



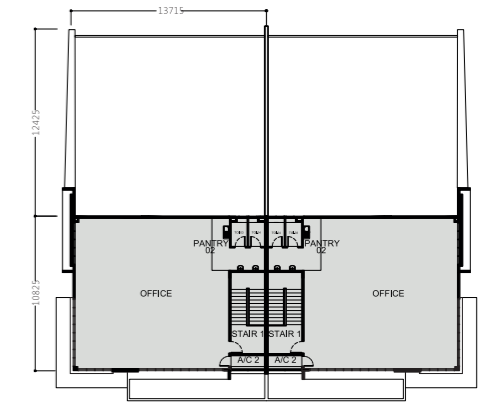
Up to 16,000 sq.ft. of Land

## 2-STOUREY SEMI-D SHOP

Land Size: 70' x 175' | Built-Up: 5,422 sqft



Ground Floor



First Floor

# Specification

## Terrace Shop

|  |  |   |   |               |
|--|--|---|---|---------------|
| <b>STRUCTURE</b>                                       |  | : | Reinforced Concrete   |               |
| <b>WALL</b>  |  | : | Brickwall / Masonry Wall / Precast Concrete Panel Wall  |               |
| <b>ROOFING MATERIAL</b>                                |  | : | Metal Deck Roofing / Reinforced Concrete Slab   |               |
| <b>ROOF FRAMING</b>                                    |  | : | Metal Truss   |               |
| <b>CEILING</b>   |  | : | Skim Coat / Plastering Ceiling  |               |
| <b>WINDOWS</b>   |  | : | Aluminium Framed Glass Window   |               |
| <b>DOORS</b>   | Main Entrance<br>Others  | : | Roller Shutter<br>Roller Shutter / Grille Door / Fire-Rated Door /<br>Flush Door / PVC Door   |               |
| <b>IRONMONGERY</b>                                     |  | : | Provided  |               |
| <b>WALL FINISHES</b>                                   | Pantries / Basin Area<br>Toilets<br>Others   | : | 1500mm Height Ceramic Tiles<br>2700mm Height Ceramic Tiles<br>Plaster / Skim Coat And Paint To Ceiling Height                                       |               |
| <b>FLOOR FINISHES</b>                                  | Pantries / Basin Area<br>Toilets<br>Stair Case 1<br>Stair Case 2<br>Verandah<br>Others | : | Ceramic Tiles<br>Porcelain Tiles<br>Porcelain Tiles & Nosing Tiles<br>Cement Render & Nosing Tiles<br>Porcelain Tiles<br>Cement Renders             |               |
| <b>SANITARY &amp; PLUMBING FITTINGS</b>                | Corner Lot<br>Intermediate Lot   | : | 5 WCs / 6 Wash Basins / 3 Showers / 3 Kitchen Sinks /<br>1 Squatting Pan<br>3 WCs / 4 Wash Basins / 2 Showers / 2 Kitchen Sink /<br>1 Squatting Pan |               |
| <b>ELECTRICAL INSTALLATION</b>                         |  |   | Corner Lot<br>Intermediate Lot  |               |
|  | Power Point<br>Lighting Point<br>Fan Point   | : | 22<br>49<br>3   | 14<br>28<br>3 |
| <b>INTERNAL TELECOMMUNICATION TRUNKING AND CABLING</b> | Fibre Wall Socket (FWS)  | : | 3   | 2             |

## Semi-D Shop

|  |  |   |   |
|--|--|---|---|
| <b>STRUCTURE</b>                                       |  | : | Reinforced Concrete   |
| <b>WALL</b>  |  | : | Brickwall / Masonry Wall / Precast Concrete Panel Wall  |
| <b>ROOFING MATERIAL</b>                                |  | : | Metal Deck Roofing / Reinforced Concrete Slab   |
| <b>ROOF FRAMING</b>                                    |  | : | Metal Truss   |
| <b>CEILING</b>   |  | : | Skim Coat / Plastering Ceiling  |
| <b>WINDOWS</b>   |  | : | Aluminium Framed Glass Window   |
| <b>DOORS</b>   | Main Entrance<br>Others  | : | Glass Door<br>Roller Shutter / Fire-Rated Door / Flush Door / PVC Door  |
| <b>IRONMONGERY</b>                                     |  | : | Provided  |
| <b>WALL FINISHES</b>                                   | Pantries / Basin Area<br>Toilets<br>Others                           | : | 1500mm Height Ceramic Tiles<br>2700mm Height Ceramic Tiles<br>Plaster / Skim Coat And Paint To Ceiling Height |
| <b>FLOOR FINISHES</b>                                  | Pantries / Basin Area<br>Toilets<br>Stair Case<br>Verandah<br>Others | : | Ceramic Tiles<br>Porcelain Tiles<br>Porcelain Tiles & Nosing Tiles<br>Porcelain Tiles<br>Cement Renders       |
| <b>SANITARY &amp; PLUMBING FITTINGS</b>                |  | : | 3 WCs / 4 Wash Basins / 2 Showers / 2 Kitchen Sinks /<br>1 Squatting Pan                                      |
| <b>ELECTRICAL INSTALLATION</b>                         | Power Point<br>Lighting Point  | : | 14<br>41  |
| <b>INTERNAL TELECOMMUNICATION TRUNKING AND CABLING</b> | Fibre Wall Socket (FWS)  | : | 2   |

# A Self Sustainable Township

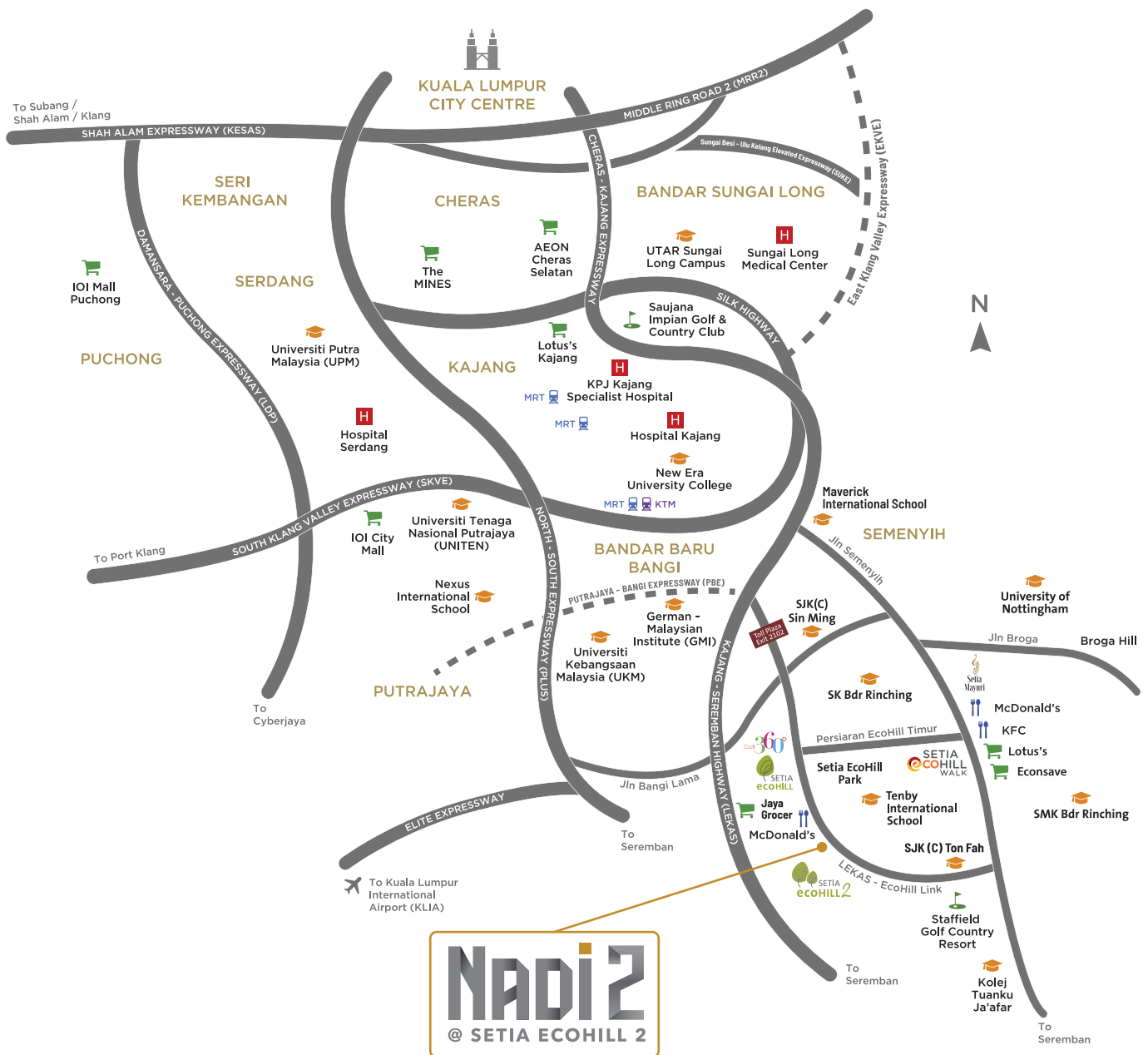
## Where Businesses Come to Bloom

Nadi stands tall as the beacon of opportunity within the bustling Semenyih landscape. With 224 unique shop-offices, Nadi is set to thrive as the go-to destination for businesses and community in Setia EcoHill 2, which is expected to have a population of 40,000 upon full development





# THE IDEAL LOCATION FOR YOUR BUSINESS



Call 03 8724 2255

SETIA ECOHILL 2 SDN BHD 199801010090 (466218-P)

SETIA ECOHILL WELCOME CENTRE  
 KELAB 360, No. 1, Persiaran Ecohill Barat, Setia Ecohill,  
 43500 Semenyih, Selangor Darul Ehsan  
 T +603 8724 2255 F +603 8724 2525 E ecohill@spsetia.com

Stay Together. Stay Setia  
 livelearnworkplay

